

**Pinza pneumatica per materozze, angolare non autocentrante a due griffe serie PB**

**2-jaw non-selfcentering angular pneumatic sprue gripper series PB**



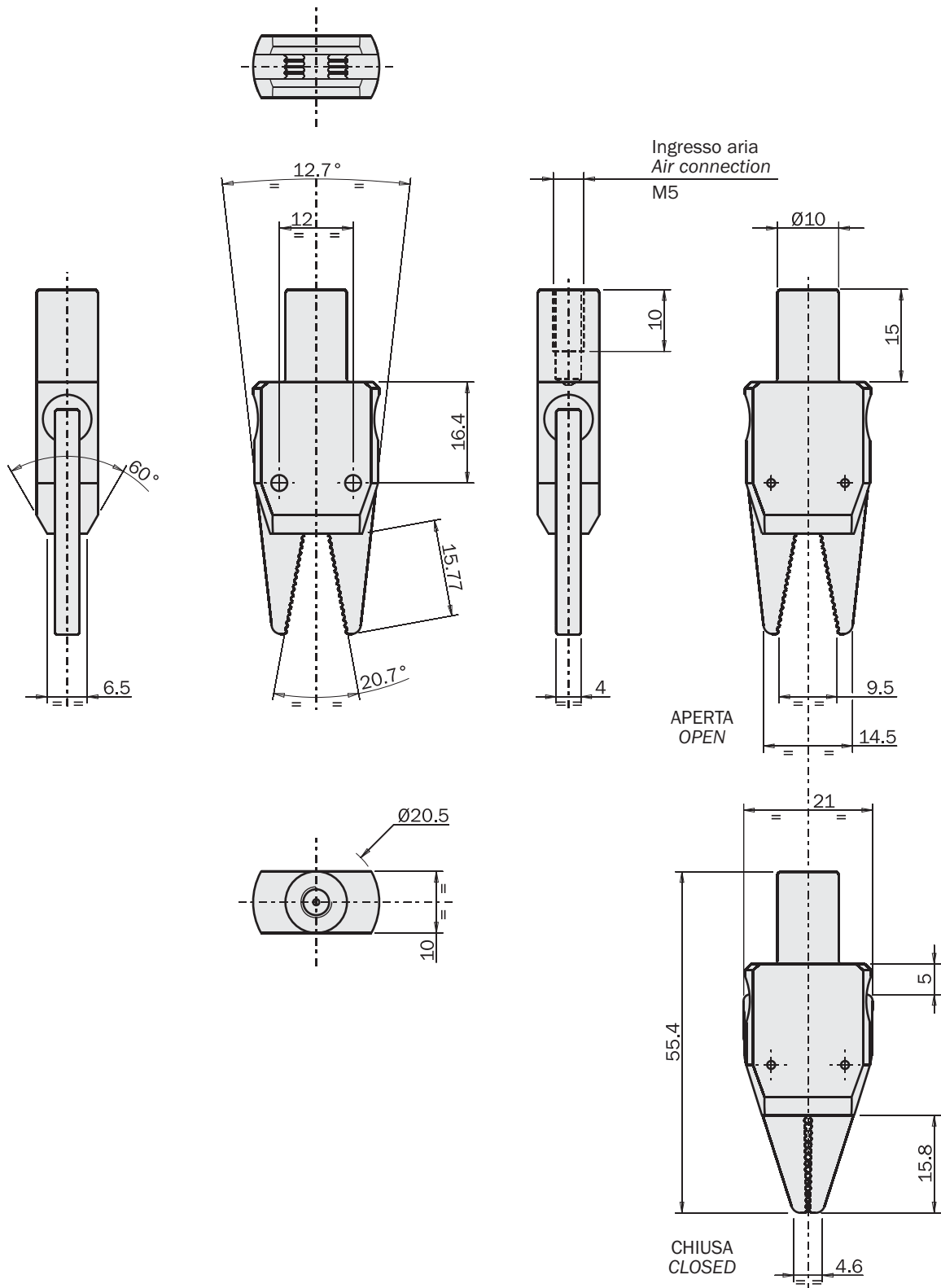
	PB-0008	PB-0013	PB-0014	PB-0015	PB-0017	PB-0140	PB-0150
Fluido Medium	Aria compressa filtrata, lubrificata / non lubrificata Filtered, lubricated / non lubricated compressed air						
Pressione di esercizio Pressure range	2.5 ÷ 8 bar						
Temperatura di esercizio Temperature range	5 ÷ 60 °C						
Corsa Stroke (±2°)	2 x 10°	2 x 15°	2 x 15°	2 x 16°	2 x 15°	2 x 15°	2 x 15°
Coppia di serraggio per griffa in chiusura a 6 bar Closing gripping torque at 6 bar each jaw	24 Ncm	80 Ncm	80 Ncm	60 Ncm	80 Ncm	80 Ncm	80 Ncm
Coppia per griffa in apertura (a 6 bar) Opening gripping torque (at 6 bar) each jaw	2 Ncm	5 Ncm	5 Ncm	5 Ncm (25 Ncm)	5 Ncm	5 Ncm	5 Ncm
Frequenza max funzionamento continuativo Maximum working frequency	3 Hz	3 Hz	3 Hz	3 Hz	3 Hz	3 Hz	3 Hz
Consumo d'aria per ciclo Cycle air consumption	0.3 cm³	1.2 cm³	1.2 cm³	1.5 cm³	1.2 cm³	1.2 cm³	1.2 cm³
Tempo di chiusura senza carico Closing time without load	0.01 s	0.01 s	0.01 s	0.01 s	0.01 s	0.01 s	0.01 s
Peso Weight	15 g	55 g	50 g	50 g	45 g	75 g	75 g
Prezzo Price							

Dimensioni (mm) / Dimensions (mm)

PB-0008

Alesaggio / Piston bore: 8mm

A semplice effetto con molla in apertura / Single-acting with opening spring



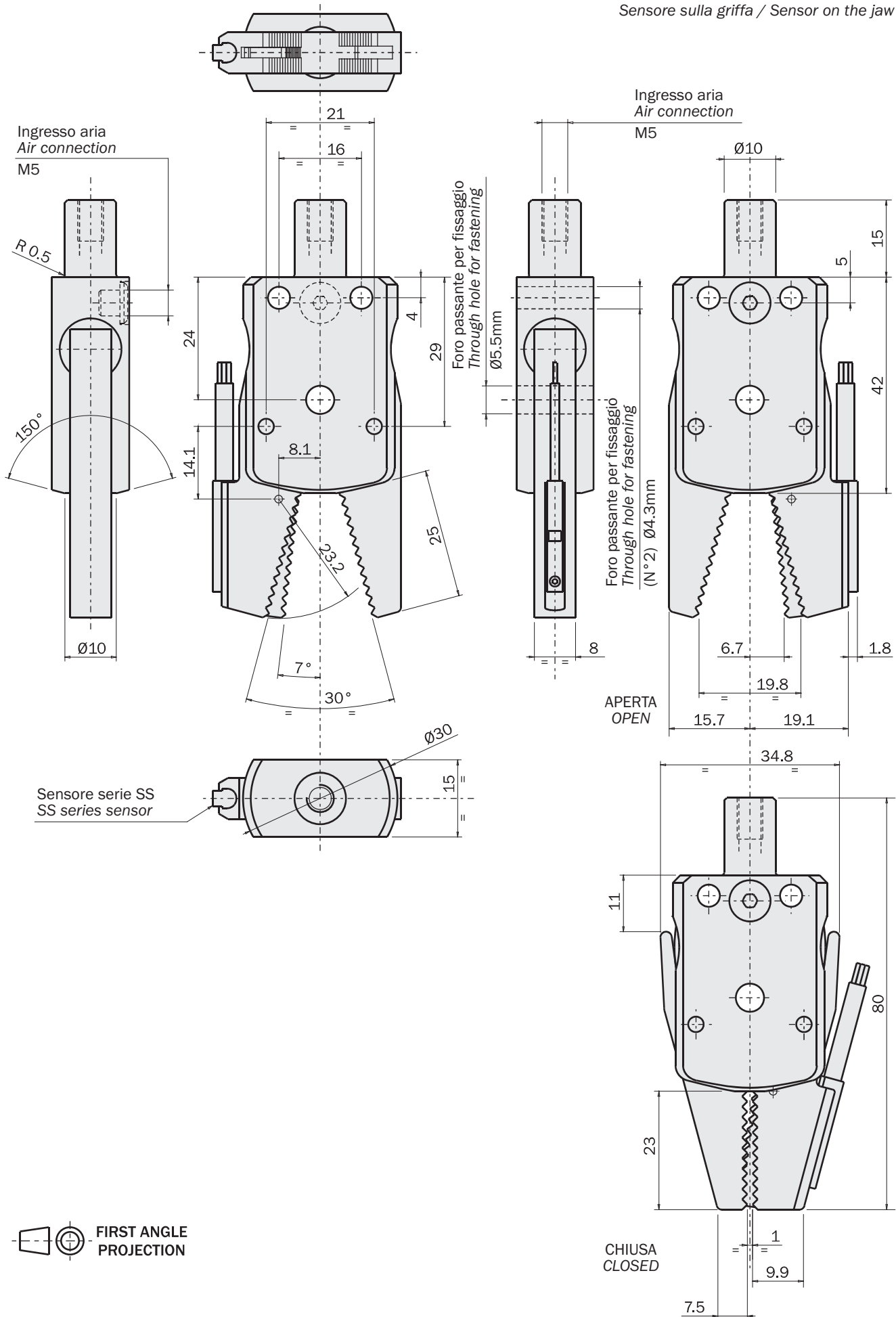
Dimensioni (mm) / Dimensions (mm)

PB-0013

Alesaggio / Piston bore: 12mm

A semplice effetto con molla in apertura / Single-acting with opening spring

Sensore sulla griffa / Sensor on the jaw



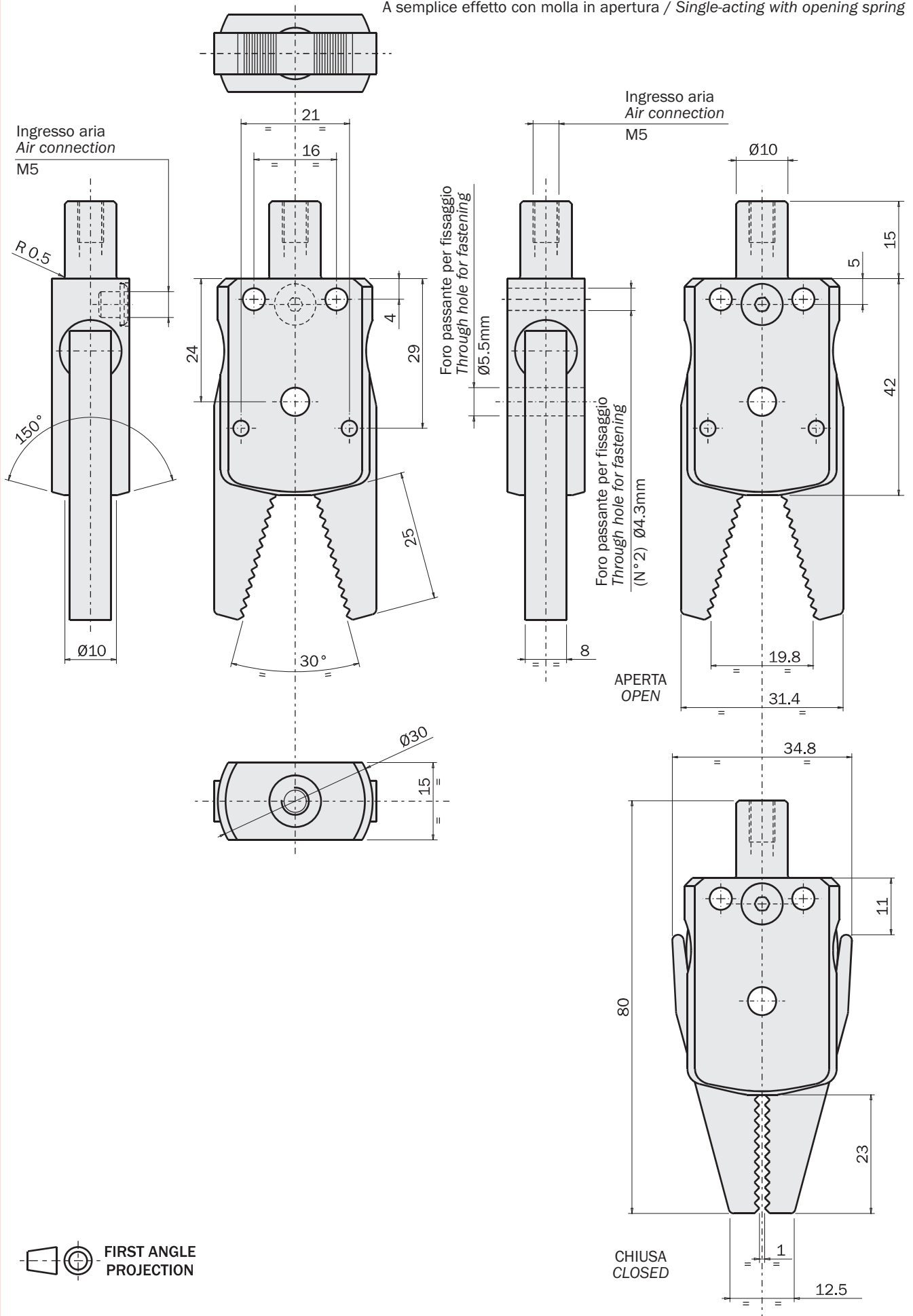
FIRST ANGLE PROJECTION

**Dimensioni (mm) / Dimensions (mm)**

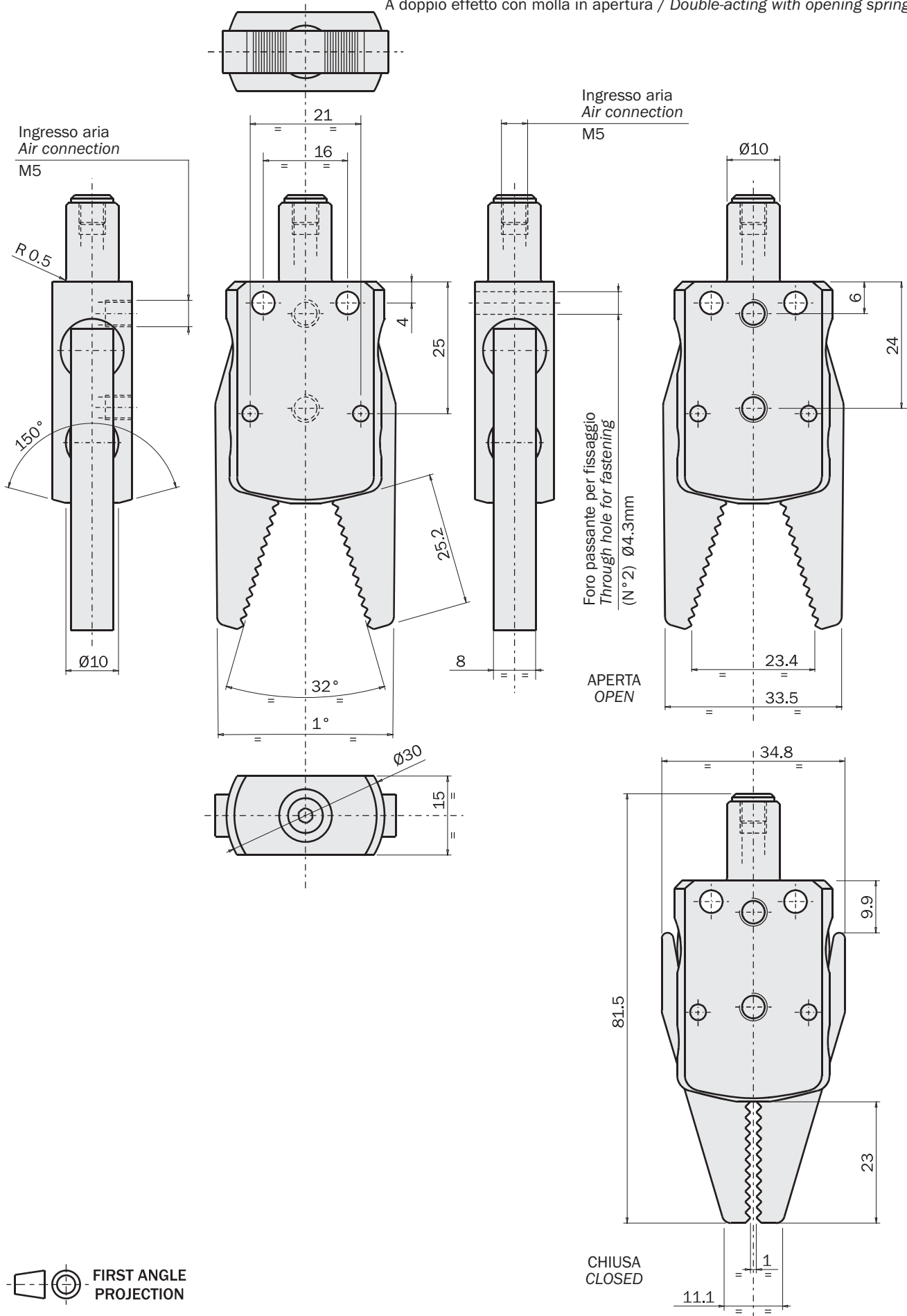
**PB-0014**

Alesaggio / Piston bore: 12mm

A semplice effetto con molla in apertura / Single-acting with opening spring



FIRST ANGLE PROJECTION



FIRST ANGLE PROJECTION

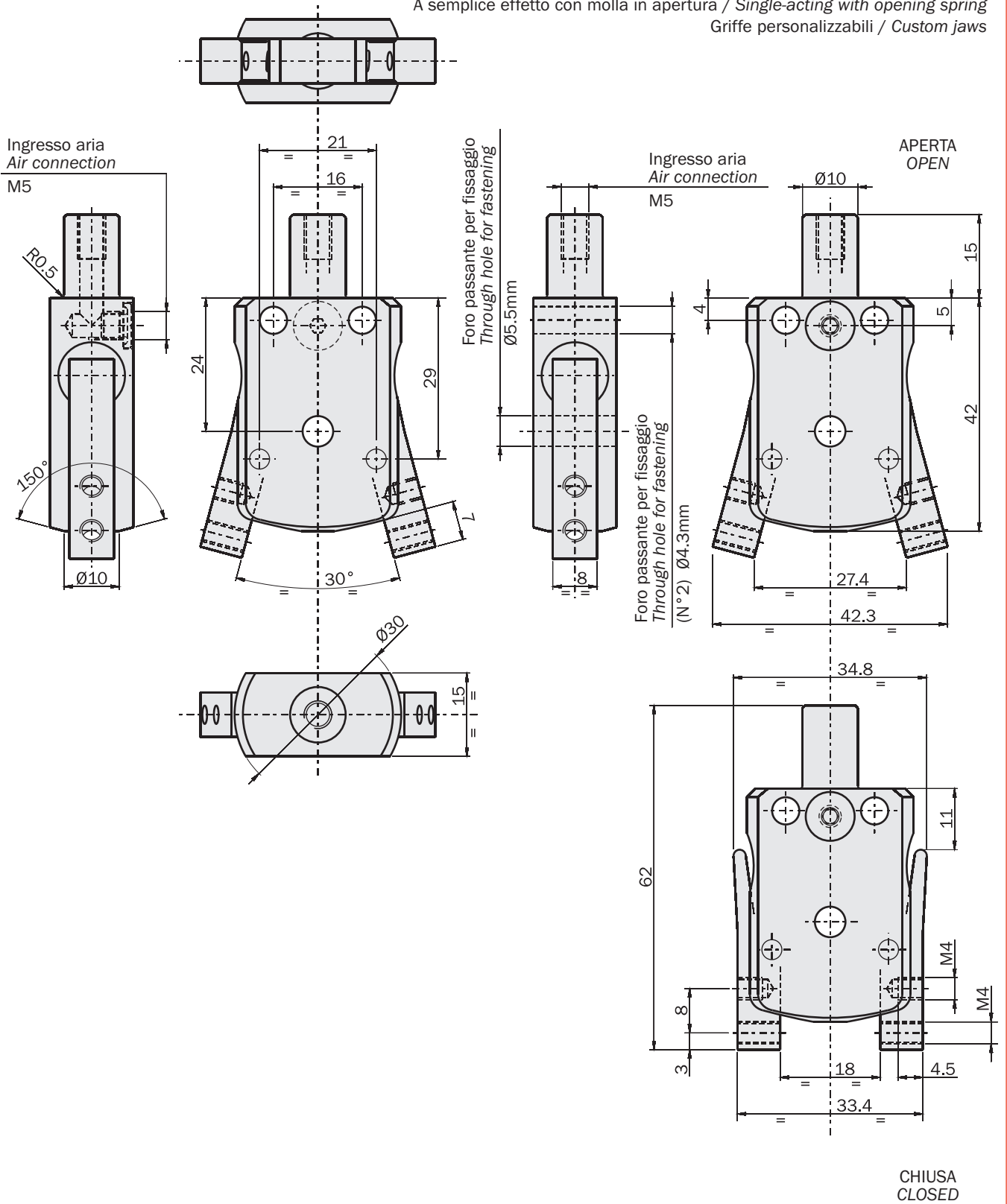
**Dimensioni (mm) / Dimensions (mm)**

**PB-0017**

Alesaggio / Piston bore: 12mm

A semplice effetto con molla in apertura / Single-acting with opening spring

Griffe personalizzabili / Custom jaws



FIRST ANGLE PROJECTION

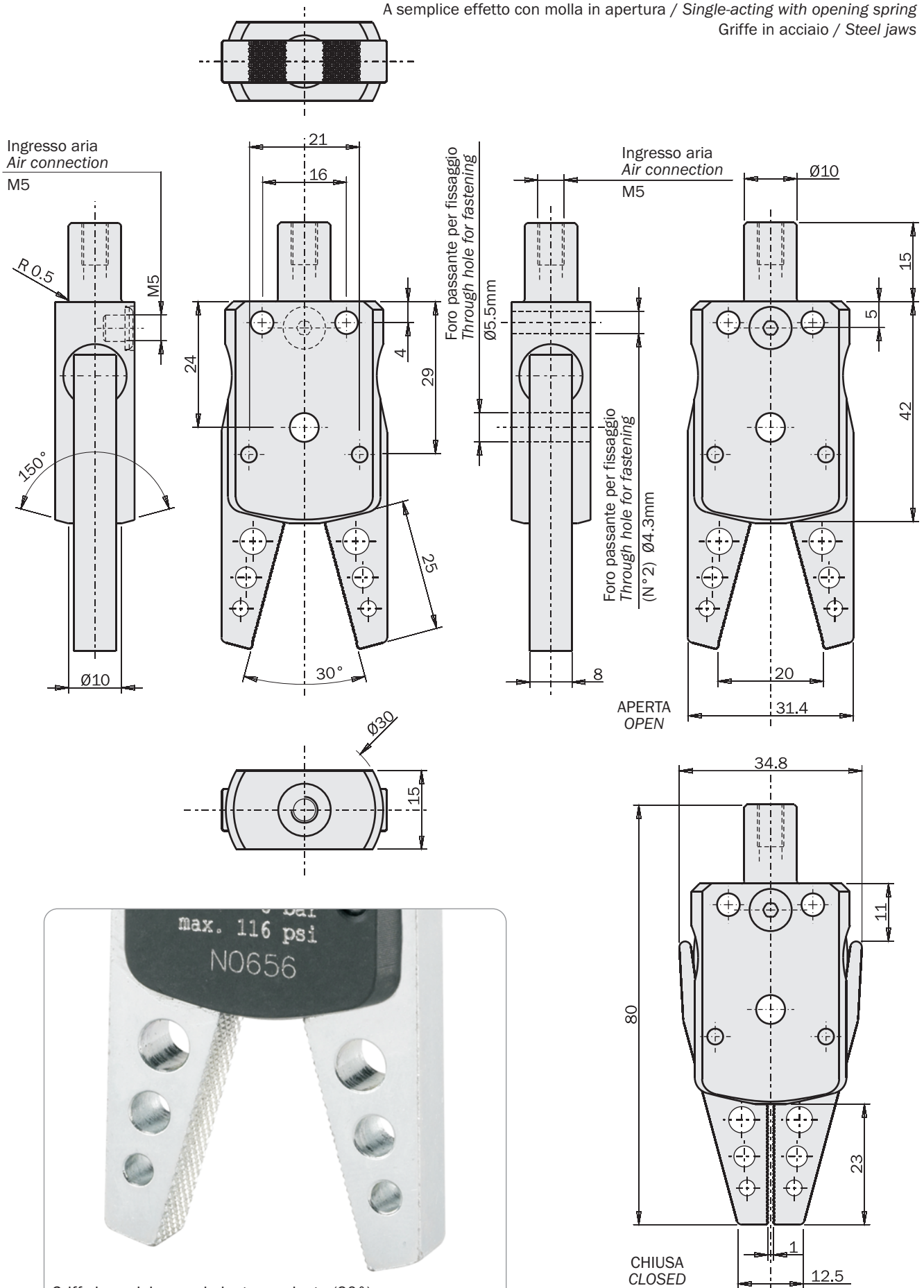
Dimensioni (mm) / Dimensions (mm)

PB-0140

Alesaggio / Piston bore: 12mm

A semplice effetto con molla in apertura / Single-acting with opening spring

Griffe in acciaio / Steel jaws



FIRST ANGLE PROJECTION

09/2009

Dimensioni (mm) / Dimensions (mm)

PB-0150

Alesaggio / Piston bore: 12mm

A semplice effetto con molla in apertura / Single-acting with opening spring

Griffe oscillanti per materozze coniche / Swiveling jaws for conical sprues

